



Principal applications

Designed for continuous re-circulation of carbonated water, aggressive chemicals, chilled water, pure or precious liquids in high pressure systems

Features

Manufactured in chemical resistant thermoplastics

Operating at an optimum flow rate of 5 litres/minute

Magnetic couplings provide an energy efficient thermal shield,
minimising heat transfer to pumped fluids

Temperature stability & product purity ensured

Leak free continuous operation

IP54 motor housing

Low condensation

Nitrile 'O' rings standard. Other materials available

Zero maintenance

PPS pump head

Long life

HPR 10/15

230V 1ph 50Hz

110V 1ph 60Hz

Port Details

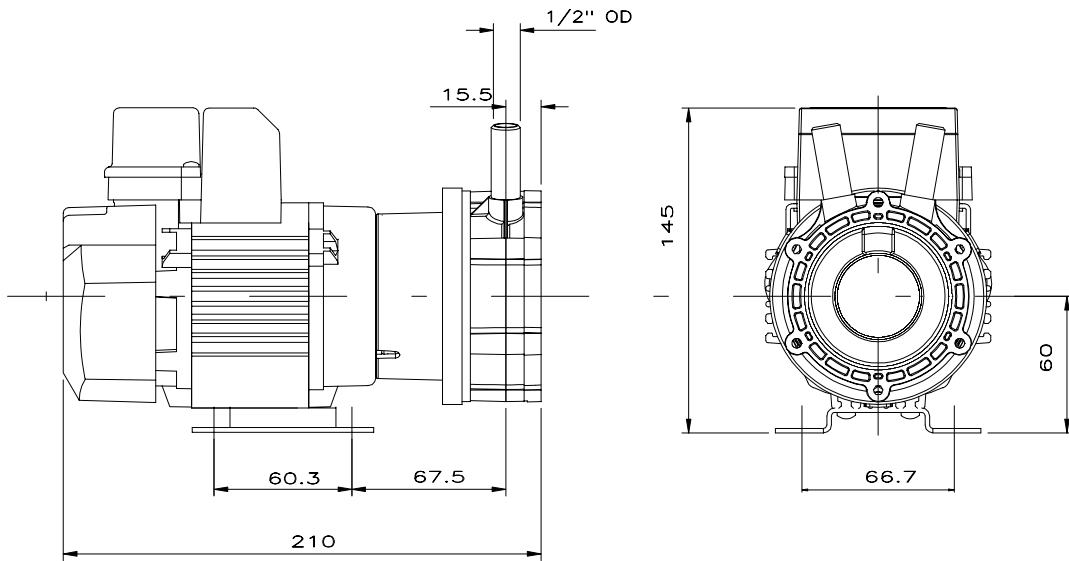
½" standard, 15mm od option

½" standard, 15mm od option



Drawings not to scale
 Dimensions in millimetres

HPR10/15

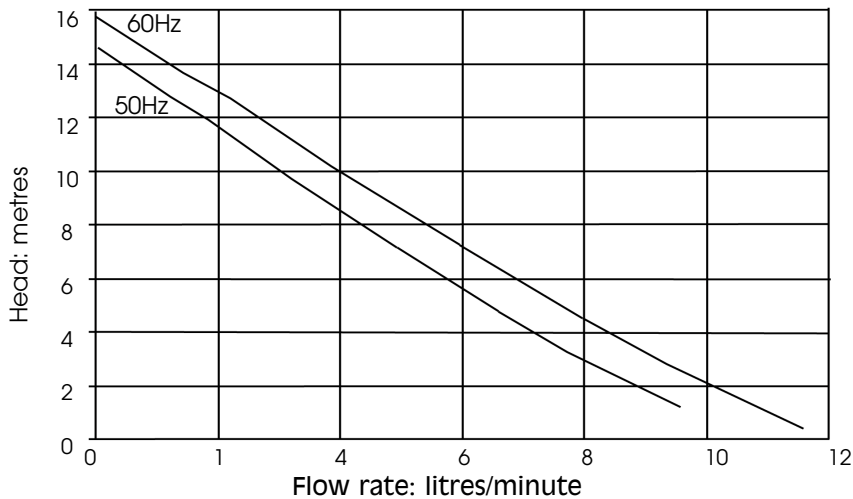


Specification

Model	Overall height mm	Overall length mm	Overall width mm	Weight kilos	Max body pressure bar	Max capacity litres/min	Max head metres	Temp °c	*Max specific gravity	Motor output Watts
HPR 10/15	145	200	100	3.3	6	10.1	15	-20° to +85°	1.0	60
		Hi sg 220		Hi sg 3.6					Hi sg 1.2	Hi sg 90

*assuming maximum viscosity Of 30cp. Refer to the Company for higher viscosities & specific gravities

Performance Tested with clean cold water @ 20° c



NOTE: These magnetically coupled pumps are designed for use with clean fluids. Solids will cause jamming. Abrasives will reduce pump life & invalidate the warranty. HPR pumps are not self-priming & are not designed to run dry.

The company reserves the right to change specifications

a division of *the* Electric Motor Company Limited

phone+44 (0)23 8066 6685

fax+44 (0)23 8066 6880

email: info@totton-pumps.com

www. totton-pumps.co.uk